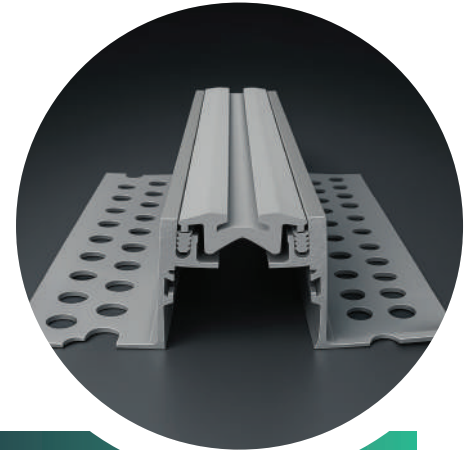


Profile Details

The FR-03 is a recessed-mounted aluminum expansion joint system incorporating a high-performance rubber insert. Its design provides a flush finish with surrounding surfaces while ensuring flexibility, durability, and long-term resistance to wear and weathering.



Application

The FR-03 functions as a recessed expansion joint cover that accommodates structural and thermal movements while maintaining a smooth and level surface. The rubber insert provides superior elasticity, slip resistance, and resilience, making it ideal for pedestrian areas and light-wheeled traffic. It is widely used in commercial, institutional, and public facilities where both performance and aesthetics are essential.

Material & Finish

The FR-03 is manufactured from high-grade aluminum alloy 6063-T6 in compliance with ASTM B-221/B-221M, integrated with a durable rubber insert available in black, white, grey, and beige. It is offered in anodized, mill, and brushed finishes, with optional powder coating to meet project-specific requirements.

Compatibility

The FR-03 is compatible with a wide range of floor finishes such as tile, marble, terrazzo, vinyl, and concrete. Its recessed design makes it suitable for both new construction and retrofit applications where a flush and reliable joint cover is required.

Optional Accessory

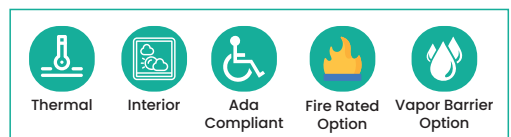
The FR-03 can be supplied with PVC or EPDM vapor barriers for enhanced moisture protection. For fire-rated applications, compatible fire barriers (rope or blanket type) may be incorporated to meet project

Profile Guide

Recessed Mounted Expansion joint System for Flooring

Applications

-30 to 120 degrees



Application	Joint Width (mm)	Fram Height (H) (mm)	Sightline (S) (mm)
Floor	50	13, 20 & 50	55 (F) 55 (C)

Materials Specifications

Chemical Composition 6063

Application	Si	Fe	Cu	Mn	Mg	Zn	Ti	Cr
Composition of 6063 as per ASTM B-221	0.2-0.6	0.35	0.1	0.1	0.45-0.9	0.1	0.1	0.1

Materials Specifications

Physical Properties 6063-T6

Specialties	Unit	Value
Density	gm/cm ³	2.71
Tensile Strength	MPA	206
Elongation in 2 inch or 50 mm	Percent	8%
Yield Strength	MPA	172

Materials Specifications

FLAT-CORNER

